



COMPANY'S PRODUCT BROCHURE & MANAGEMENT PROFILE



**SIM PROPERTIES
& HOMES LIMITED**

Housing all Nigerians

**SIM
PROPERTIES
& HOMES LTD.**



LAGOS OFFICE

SIM PROPERTIES & HOMES LTD.
Plot 11, Channels TV Rd, Isheri North Opic,
Opposite Shekinah Plaza, Opic B/stop,
Off Lagos-Ibadan Exp. Rd, Lagos Nigeria.

OFADA OFFICE

MASTERS GOLDEN CITY
Papalanto / Ofada junction,
After Trinity College Ofada,
Ogun State.

📷 simproperties 📘 simpropertiesandhomeslimited

✉ simpropertiesandhomesltd1@gmail.com

🌐 www.sphomesltd.com, www.simpropertiesandhomeslimited.com

☎ 08033505455, 08053243707

ESTATE FACILITIES
MANAGERS



IN PARTNER WITH





MASTER HAVEN
(ABUJA)



5 STAR HOTEL
(AUCHI EDO STATE)



MASTER'S COURT
(LEKKI LAGOS)



MASTER'S GOLDEN CITY
(OFADA, OGUN STATE)



A PROPOSED 48 UNITS OF 3 BEDROOM LUXURIOUS FLATS WITH A FACILITY THAT WILL ALLOW EACH OCCUPANT TO PARK AT LEAST 2 CARS.



N25,000,000
OFF PLAN SALES PER FLAT.
NHF MORTGAGE LOAN AND
OTHER MORTGAGE LOAN
CAN BE ARRANGED...

Facilities and Services

INTERLOCKED COMPOUND/ROAD | MINI SHOPPING MALL/OFFICE
PARKING SPACE FOR 2 CARS/FLAT | FITTED KITCHEN
TREATED BOREHOLE | DEDICATED TRANSFORMER
SWIMMING POOL | PLAYGROUND
24 HOURS SECURITY AND POWER SUPPLY

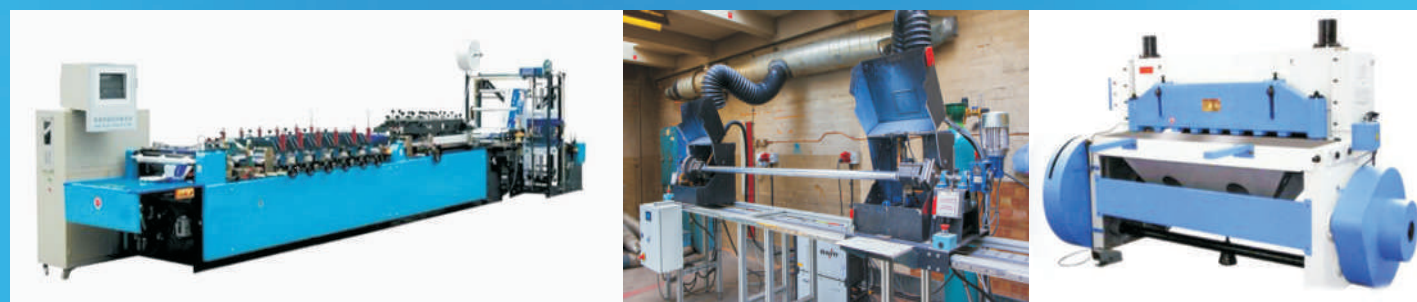




- **ALUMINUM LONGSPAN**
- **INSTALLATION ACCESSORIES**
- **CORRUGATING**
- **FABRICATION**



Simfirst Aluminum & Nails Ind. Ltd



**FOR MORE INFO:
08162450705**

WHO WE ARE

Sim Properties and Homes Limited is a reputable development/ construction company with consortium of qualified professionals endowed with efficient and dynamic approach to undertake First Class development in Real Estate and Construction Services for Companies, Government, Institution, Individuals in Nigeria and beyond with Satisfaction guaranteed.

We are committed to high quality work. We are fully equipped with modern day machinery and tools. Our team includes high qualified, tested and experienced professionals and technicians in various field of Real Estate Development and Construction industry.

WHO WE ARE

Taking the Real Estate Development/Construction to the next level.

OUR MISSION STATEMENT

We look for greater challenges with our clients and we confidently believe that we are poised with astuteness to achieve success in all our projects. It is our desire to see every Nigerian have a roof over their heads.

OUR CORE VALUES

- Quality engineering and services
- Speedy and Consistent delivery of services
- Customers satisfaction/delight
- Transparency and accountability
- Cost consciousness and waste reduction
- Practices, processes and procedures driven by international best practices.

THE CEO

Prof. Ahonsi Simeon Ohiren had his HND in Urban and Regional Planning, Auchi Polytechnic Auchi, Msc in Housing Development and management, University of Ibadan, MBA in Marketing, Ladoke Akintola University, Ogbomosho. Honourary Doctorate Degree in Humane Letter (D.H.L), European-American University, Dominica. Professor of Housing Development and Management in the University of Berkley, Michigan, USA, an Ambassador/Patron of American Liberty University (African Representative) with over twelve (12) years in Real Estate Development Practice.

In doing what he is trained to do, the following honours have been bestowed on him such as; **16th men of achievement Awards, Great African Merit Award, Nation Builders Merit Award, National Service Merit Award, African Leader Par Excellent Award, Eminent African Leadership Merit Award, South African Outstanding 2009 Great African Patriotic Achievers Award, The grand Award for Entrepreneurship in Nigeria (GAFENIN), Nigeria Meritorious Services Award 2009 for Landmark Achievement, Distinguished National Service Merit Award (DINSMA), The Nigerian Enterprise Award for Excellence (NEAFEX), the Eagles of Hope Award and Nigeria's Real Estate Practitioner's Gold Award 2010 (NIREPA)**



**12 UNITS OF 3 BEDROOM FLATS
ALL ROOMS ENSUITE AT,
DAWAKI EXTENTION ABUJA...**

FACILITIES / INFRASTRUCTURE

- A mini shopping mall / Office
- Swimming pool / Recreational Ground
- Waste Disposal / Treatment
- Borehole / Treated water plant
- A well palled / Interlocked compound & road
- Dedicated security and 24 hours power supply e.t.c
- Each occupant to park at least 2 cars.

N25,000,000

**OFF PLAN SALES PER FLAT.
NHF MORTGAGE LOAN AND
OTHER MORTGAGE LOAN
CAN BE ARRANGED...**



INTRODUCING ELIZABETH COURT OF 6 BEDROOM LUXURIOUS DUPLEXES WITHIN MASTERS GOLDEN CITY ESTATE OFADA



N25,000,000
Mortgage Available



Features:

- 6 Luxurious Rooms All Ensuite
- 6 Bathrooms
- 7 Toilets
- Well Fitted Kitchen (cabinet)
- Vitrified Floor Tiles
- Pop Ceiling In All Spaces
- Ample Parking Space For 7 Cars
- Well Landscaped Both Hard & Soft
- Maid Room
- Jacuzzi In Masters / Madam Badroom
- Standard Wall Mounted Light Fittings
- Switches And Sockets
- Reinforced Core Metal Security Doors
- Sit Out / Terrace
- 24/7 Water Supply
- Ample Parking Space
- Street Lighting
- 24/7 Security
- Facility Management
- Landscaped Ground
- Children Play Ground

EXECUTIVE MANAGEMENT TEAM



REBECCA AHONSI MRS.
(G.M.D)



JEDALO OWOSENI MRS.
(HEAD MANAGEMENT/LEGAL)



OPEYEMI OGUNTUASE MRS.
(EXECUTIVE ASSISTANT LEGAL, PROJECT
AND BUSINESS DEVELOPMENT)



VICTORIA MADUBUKO MRS.
(G.M MARKETING & BUSINESS DEVELOPMENT)



ARCH. RICHARD KAYODE
(PROJECT ARCHITECT)



ENGR. IJIE P. OMOIKE
(PROJECTS ENGINEER MANAGER)



MR. ALABI MOSES ADETUNJI
(BUSINESS DEVELOPMENT /
MARKETING EXECUTIVE)



MR. ISRAEL EBALUANA
(CREATIVE EXECUTIVE)

INTRODUCTION OF 2 KINDS OF PRODUCTS

DIAMOND MASTERS PRODUCTS

- 6 Bedrooms Luxurious Duplexes - N25, 000,000
- 4 Bedrooms Fully Detached Bungalows - N16,500,000
- 3 Bedrooms Fully Detached Bungalows - N15,000,000
- 2 Bedrooms Fully Detached Bungalows - N12,000,000
- 3 Bedrooms Semi Detached Bungalows with (Ante Room) - N13,000,000

SPECIAL FEATURE

Coated Slate Roof | Concrete Facial Finishing | BQ Space At the Back Of Apartment
Dual Fencing | Burglary | Gated | Ante Room | Well Spaced Compound For 6 Cars Or More etc

GOLD MASTERS PRODUCTS

- 3 BEDROOMS FULLY DETACHED BUNGALOWS - N12,000,000
- 3 BEDROOMS SEMI DETACHED BUNGALOWS - N11,000,000
- 2 BEDROOMS FULLY DETACHED BUNGALOWS - N9,000,000
- 2 BEDROOMS SEMI DETACHED BUNGALOWS (WITH ANTE-ROOM) - N7,500,000
- 2 BEDROOMS SEMI DETACHED BUNGALOWS - N7,000,000
- 1 BEDROOMS SEMI DETACHED BUNGALOW - N6,000,000
- 3 IN 1 ONE BEDROOM SEMI DETACHED BUNGALOW - N5,000,000
- STUDIO APARTMENT - N2,500,000
- A ROOM APARTMENT - N2,000,000

SPECIAL FEATURE

Parking space for more cars | P.O.P Ceiling in all spaces | Vitrified floor tile
Well landscaped both hard and soft | pre - sit (Ante Room)



**4
BEDROOM
FULLY-DETACHED**

DIAMOND PRICE : N16,500,000

GOLD PRICE:

PAYMENT OPTIONS

OUTRIGHT PAYMENT: N16,000,000

INSTALMENT PAYMENT 50% DOWN PAYMENT

50% ONE YEAR SPREAD PAYMENT

NHF PAYMENT SCHEME 10% DOWN PAYMENT,
UP TO 30 YEARS SPREAD PAYMENT

3 BEDROOM FULLY-DETACHED



DIAMOND PRICE : N15,000,000

GOLD PRICE: N12,000,000

PAYMENT OPTIONS

OUTRIGHT PAYMENT:

N15,000,000 / N12,000,000

INSTALMENT PAYMENT 50% DOWN PAYMENT

50% ONE YEAR SPREAD PAYMENT

NHF PAYMENT SCHEME 10% DOWN PAYMENT,

UP TO 30 YEARS SPREAD PAYMENT

MASTERS GOLDEN CITY OF ADA APPROVED LAYOUT PLAN



STATE OF ANAMBRA
SAND 10/25/2007/017
SIM PROPERTIES & HOMES LTD.
A. CHS PARS AUTO (SAND) ROAD/ADANA (SAND) VILLAGE
ORIGIN: LOCAL GOVT. AREA ONE IN. STATE
SCALE: 1:2000
ORIGIN: T. N. (2008/11)
AREA: 500.00 ACRES (2012/4 RECORDED)

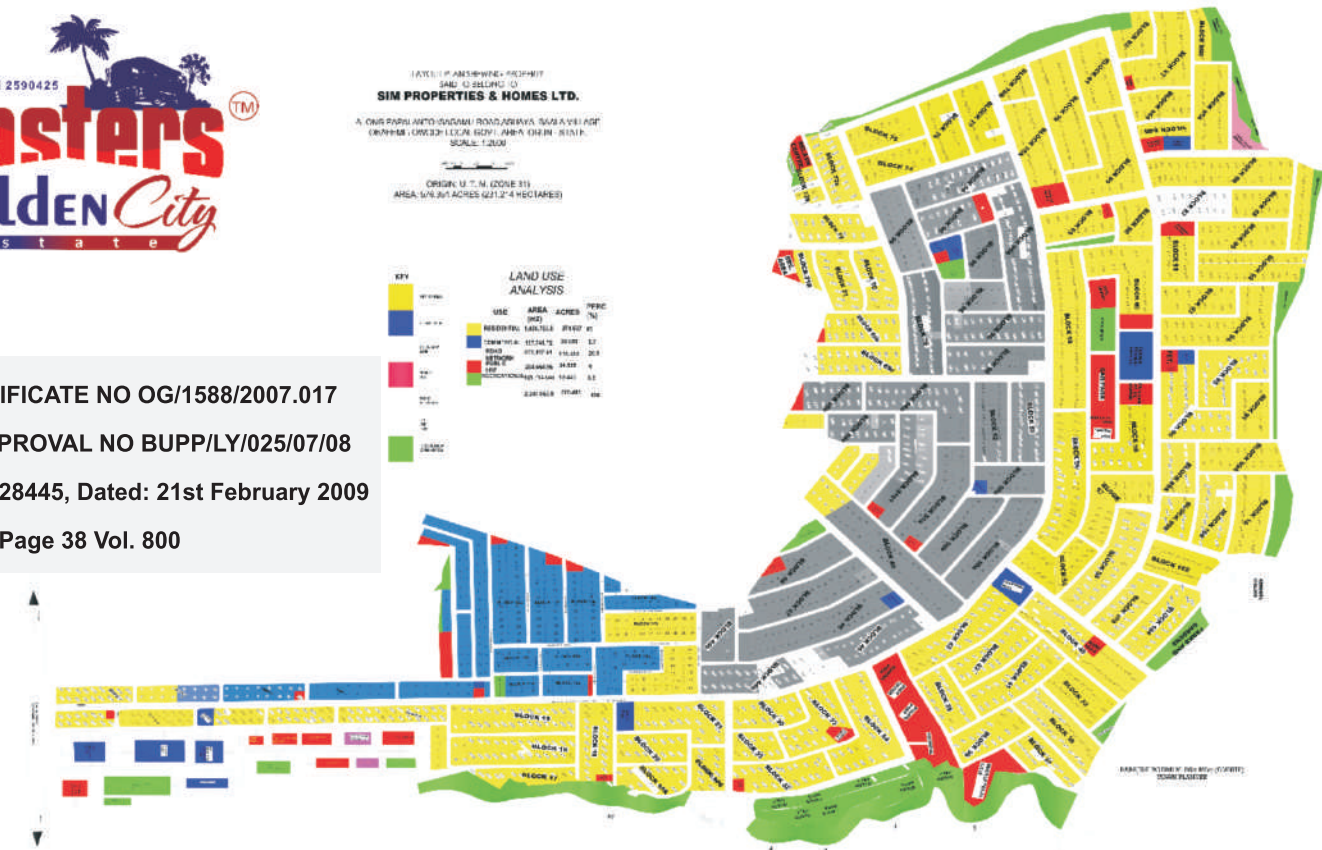
KEY	LAND USE ANALYSIS
1	USE: RESIDENTIAL
2	USE: COMMERCIAL
3	USE: INDUSTRIAL
4	USE: AGRICULTURAL
5	USE: RECREATIONAL
6	USE: PUBLIC UTILITIES
7	USE: OPEN SPACE
8	USE: WATER BODY
9	USE: OTHER

LAND CERTIFICATE NO OG/1588/2007.017

LAYOUT APPROVAL NO BUPP/LY/025/07/08

C of O No. 028445, Dated: 21st February 2009

Reg. No. 38 Page 38 Vol. 800



INFRA STRUCTURAL FACILITY PROVIDED IN THE ESTATE

- Good road network
- Pipeline water
- Transformer / Electricity
- Drainage (Covered underground line drains)
- Security Services
- School / College
- Shopping Mall
- Saloon
- Street Lighting
- Landscape and Horticulture
- Refuse Disposal
- Gate House
- Recreational Facilities and Central Estate Clubhouse
- External Perimeter Fence



ESTATE FACILITIES MANAGERS



IN PARTNER WITH



3 IN 1 STUDIO APARTMENT

DIAMOND PRICE :

GOLD PRICE: N2,500,000

PAYMENT OPTIONS

OUTRIGHT PAYMENT: N2,500,000

INSTALMENT PAYMENT 50% DOWN PAYMENT

50% ONE YEAR SPREAD PAYMENT

NHF PAYMENT SCHEME 0% DOWN PAYMENT,
UP TO 30 YEARS SPREAD PAYMENT

DIAMOND PRICE :

GOLD PRICE: N6,000,000/N5,000,000

PAYMENT OPTIONS

OUTRIGHT PAYMENT: N6,000,000/N5,000,000

INSTALMENT PAYMENT 50% DOWN PAYMENT

50% ONE YEAR SPREAD PAYMENT

NHF PAYMENT SCHEME 0% DOWN PAYMENT,
UP TO 30 YEARS SPREAD PAYMENT

1 BEDROOM SEMI-DETACHED BUNGALOW

3 BEDROOM SEMI-DETACHED

DIAMOND PRICE : N13,000,000

GOLD PRICE: N11,000,000

PAYMENT OPTIONS

OUTRIGHT PAYMENT:

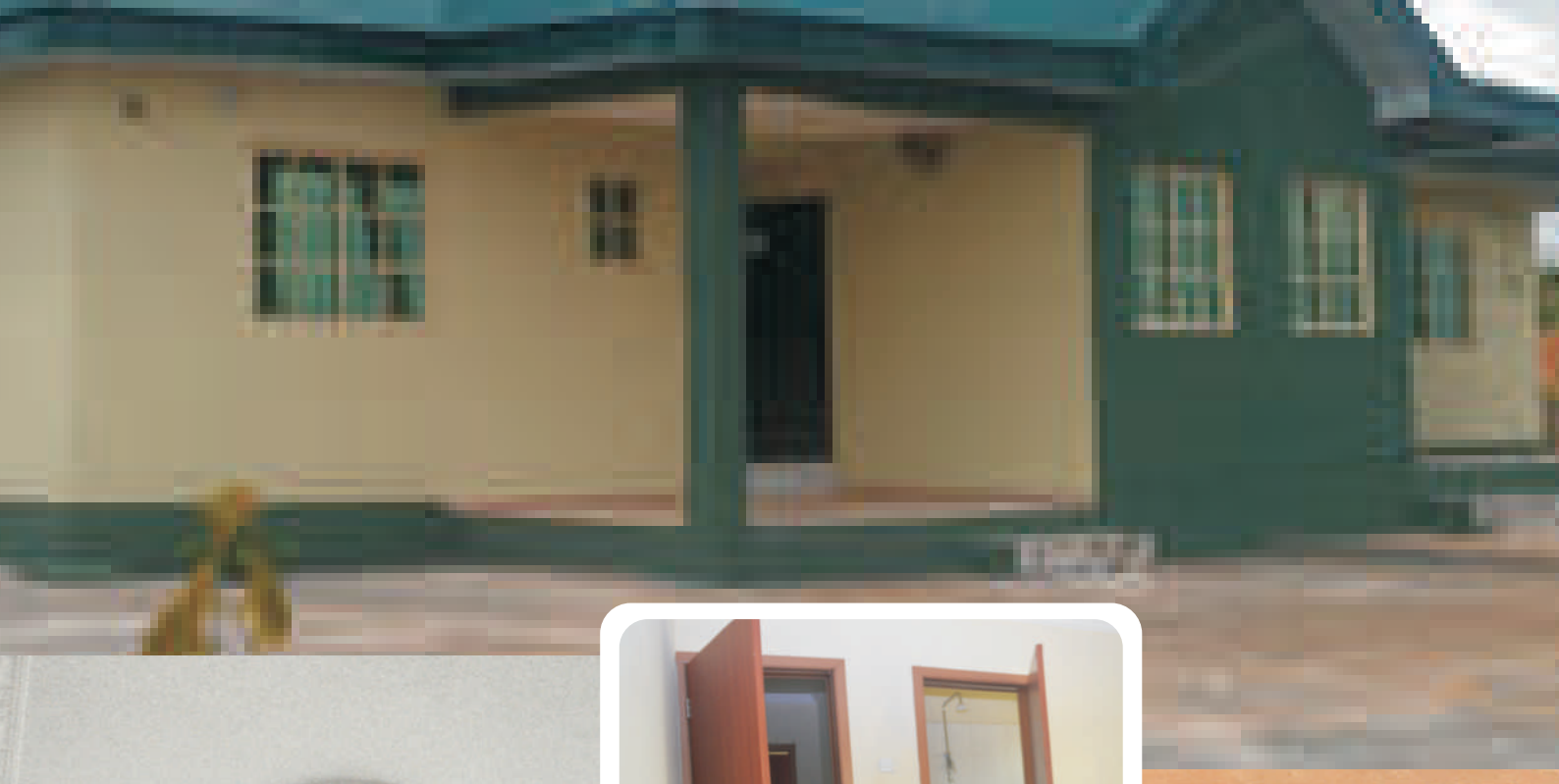
N13,000,000 / N11,000,000

INSTALMENT PAYMENT 50% DOWN PAYMENT

50% ONE YEAR SPREAD PAYMENT

NHF PAYMENT SCHEME 10% DOWN PAYMENT,
UP TO 30 YEARS SPREAD PAYMENT

**2 BEDROOM
SEMI-DETACHED BUNGALOW
WITH ANTE-ROOM**



DIAMOND PRICE :
GOLD PRICE: N7,500,000

PAYMENT OPTIONS
OUTRIGHT PAYMENT: N7,500,000
INSTALMENT PAYMENT 50% DOWN PAYMENT
50% ONE YEAR SPREAD PAYMENT
NHF PAYMENT SCHEME 0% DOWN PAYMENT,
UP TO 30 YEARS SPREAD PAYMENT

**2 BEDROOM
SEMI-DETACHED BUNGALOW
WITHOUT ANTE-ROOM**

DIAMOND PRICE :
GOLD PRICE: N7,000,000

PAYMENT OPTIONS
OUTRIGHT PAYMENT: N7,000,000
INSTALMENT PAYMENT 50% DOWN PAYMENT
50% ONE YEAR SPREAD PAYMENT
NHF PAYMENT SCHEME 10% DOWN PAYMENT,
UP TO 30 YEARS SPREAD PAYMENT



**2 BEDROOM FULLY
DETACHED BUNGALOW**

DIAMOND PRICE : N12,000,000
GOLD PRICE: N9,000,000

PAYMENT OPTIONS
OUTRIGHT PAYMENT: N12,000,000 / N9,000,000
INSTALMENT PAYMENT 50% DOWN PAYMENT
50% ONE YEAR SPREAD PAYMENT
NHF PAYMENT SCHEME 10% DOWN PAYMENT,
UP TO 30 YEARS SPREAD PAYMENT



Children play ground

ADMISSION
OPEN FOR
2019



Boarding House
Available
from Age **7** Upward



LEARNING THROUGH PLAY



SIMCITY INTERNATIONAL SCHOOL

CRECHE, NURSERY, PRIMARY, COLLEGE

IGNITING A BRIGHTER FUTURE OUR FEATURES

- CERTIFIED TEACHERS
- **CLASS PROGRAMS**
- PLAY ROOM
- **GREEN PLAYGROUND**

OUR BENEFITS

- Small Class sizes
- Big room sizes
- Loving Atmosphere
- Best Education Plan
- Beautiful Background
- Wide Study rooms

FOR MORE INFO
+234 8053243707

PlayGround - PRESCHOOL - After school

8

9

